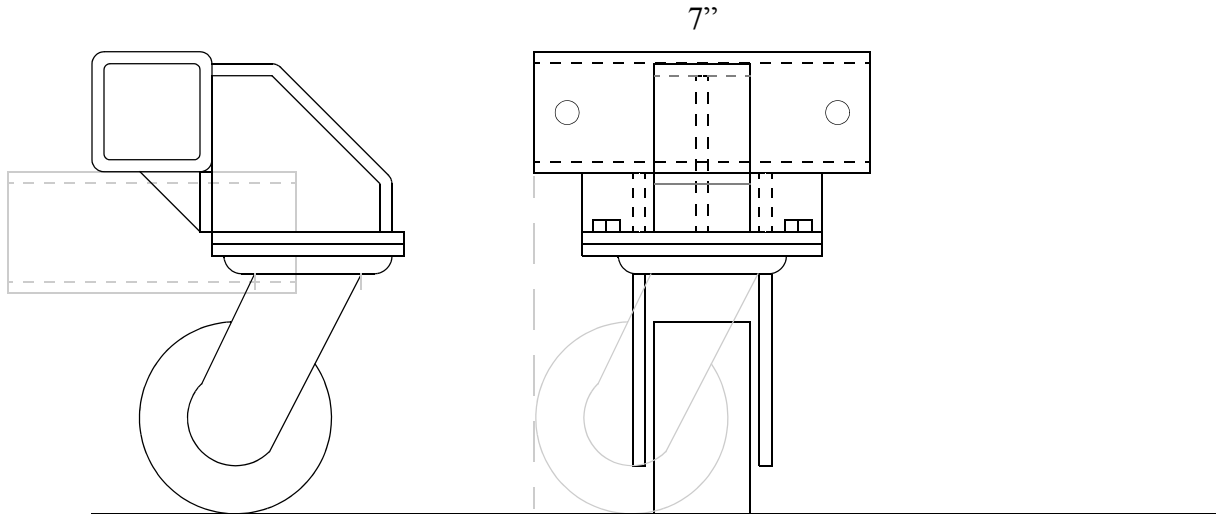


Each piece needs 2 6" pieces of receiver tube and 8 1.5x1.5x2.125" gussets as shown
Holes are 1/2" and are to have unplated 1/2-13 nuts welded over them for pinch bolts

MAKE 6 PIECES

SCALE 1:4



The castor cannot foul against the machine being moved or against an adjacent castor regardless of orientation

MAKE 4 PIECES

